

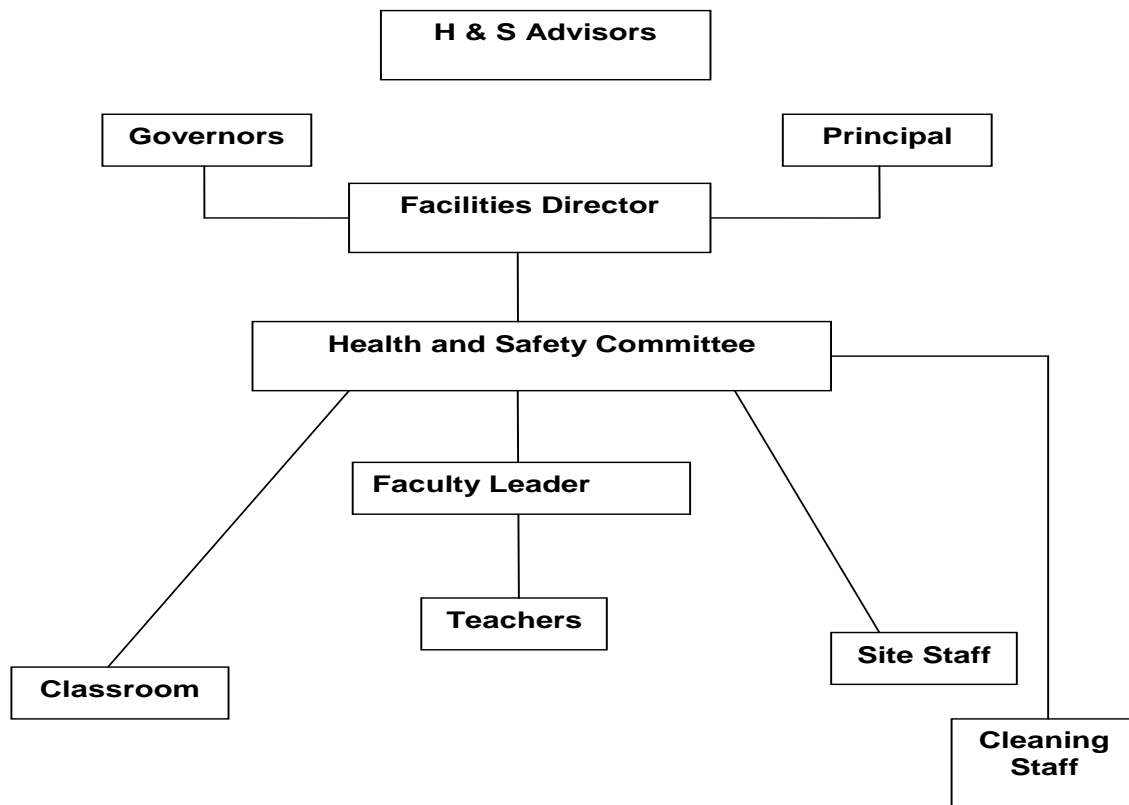
## SAFETY POLICY

Statement of general policy with regard to the health, safety and welfare at work of all persons in accordance with the provisions of the Health and Safety at Work Act Etc. 1974 including all other relevant legislation regarding the School and its working procedures.

This document sets out the policy, organisation and arrangements for the implementation and the safeguarding of the health, safety and welfare of all persons in connection with the activities of NST and recognises and accepts its responsibilities as an employer, where it is reasonably practicable to do so a safe and healthy workplace and a safe and healthy working environment will be provided for all employees.

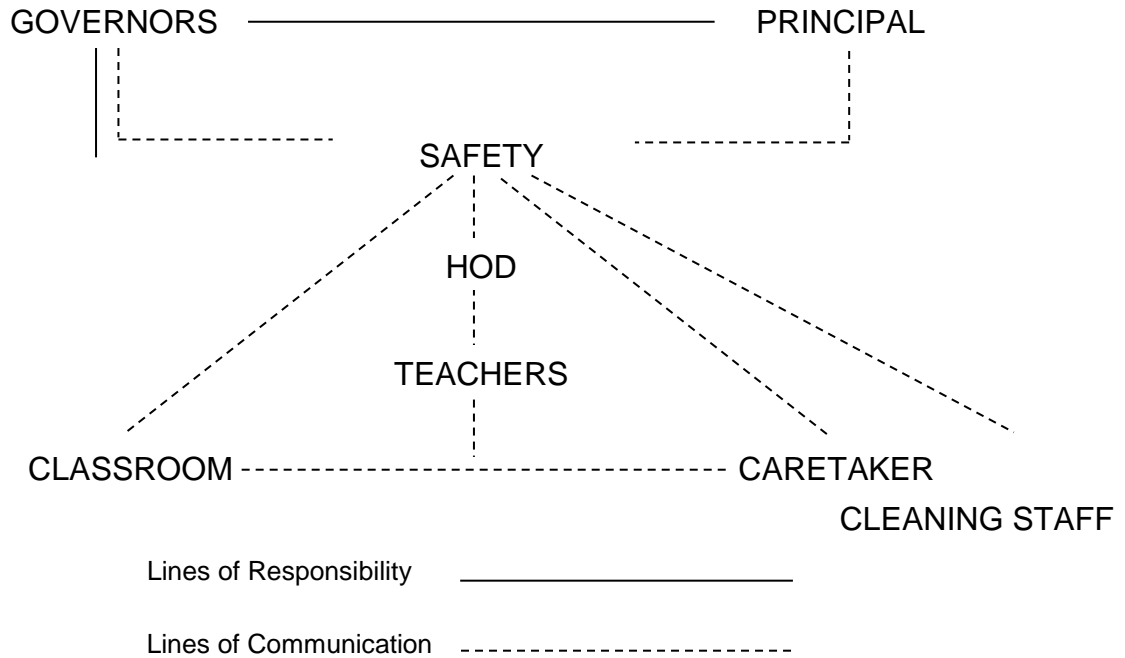
Failure to observe the Policy and Provisions of the Safety at Work Etc. Act 1974 or other relevant legislative requirements could result in prosecution. The penalties for such failure are a monetary fine on summary conviction and up to two years in jail on indictment.

### Organisation and Responsibilities



| Origination | Authorised by | Issue No. | Page 1 of 2 | Date     |
|-------------|---------------|-----------|-------------|----------|
| MM          | NW            |           |             | 28.06.18 |

## ORGANISATION AND RESPONSIBILITIES



|             |               |           |             |                 |
|-------------|---------------|-----------|-------------|-----------------|
| Origination | Authorised by | Issue No. | Page 2 of 2 | Date            |
| <b>MM</b>   | <b>NW</b>     |           |             | <b>28.06.18</b> |